



May 2010

INTRODUCTION

•This Fire is classified as a Cooker, therefore not listed on clean air wood fire websites.

•BUILDING CONSENTS (PERMITS)

It is the house owners responsibility to have the correct permit lodged and accepted by the local building authority. Your Installer may offer to assist with this and in some cases undertake the complete application, lodgement, payment, etc. on your behalf (a fee maybe incurred).

•INSTALLATION

All solid fuel heating appliances sold by Broady's NZ Ltd must be installed to the requirements of the **Standard AS/NZS 2918:2001** and the product instructions supplied by us and/or with the appliance. This includes the "FINISHING" of your installation e.g. the correct venting, hearth sizing, and fascia and/or mantle surrounds.

Broady's NZ Limited do not undertake installation and/or site work associated with the installation of the products we sell, nor warrant their installation. We recommend that the installation of all solid fuel heating appliances be carried out by a Qualified Registered Installer with the NZ Home Heating Association, of which Broady's are also a member. We can provide a list of these installers, or if preferred visit their website for a full and current list at www.nzhha.co.nz/membership.asp. By listing these Installers, it is not implied nor inferred that Broady's recommend them or their work. As the contract for installation is between you and the chosen Installer – payment is due directly to them, normally on the completion of the installation. Any possible issues regarding your installation are to be addressed to the Installer.

KEEP THEIR NAME ON FILE.

•ELECTRICAL / PLUMBING

If any electrical/plumbing work is required, it must be carried out by a licensed Electrician/Plumber. All electrical work must be carried out to AS/NZS3000 or AS/NZS3100 requirements, plumbing work carried out to appropriate requirements of AS3500.4.1 or NZS4603, and both electrical and plumbing to local regulatory authority.

•SAFETY WARNING

- Only use dry, well seasoned firewood. Never use driftwood or treated timber
- DO NOT use flammable liquids or aerosols to start or re kindle the fire
- DO NOT OVERFIRE – only use the high heat setting when lighting the fire and reloading. Once fire is alight reduce air slide control to lower setting. Over firing may result in the warranty becoming void.
- Replace damaged and worn out consumables like baffles, liners, air tubes, rope seals etc with genuine replacements to ensure the correct and safe operation of the fireplace.
- If hot water boosters or boilers are fitted the appliance must be connected to an open vented low pressure hot water system.
- Make sure the minimum safety heater-to-wall clearance distances are maintained between the heater and any heat sensitive materials (furniture, drapes, blinds etc)
- Solid Fuel heaters with glass doors are not to be used as an open fire.

May 2010



Dimensions

Height to Hob	910mm
Width	700mm
Depth	560mm
Weight	200Kg
Fire Box Dimensions	
Height	280mm
Width	450m
Depth	320mm
Oven Dimensions	
Height	280mm
Width	440m
Depth	350mm

Clearances from Combustibles

Left	400mm
Right	400mm
Rear	125mm
Corner	400mm

Min Hearth Requirements

Extending in front of oven Door	450mm
Extending from side of oven Door	200mm

Flue

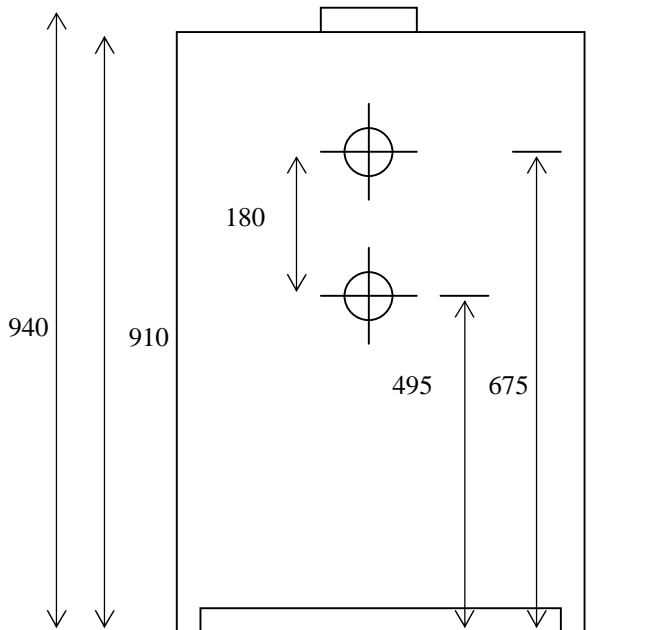
Diameter	150mm
Position	Rear Centre

Hot Water Options

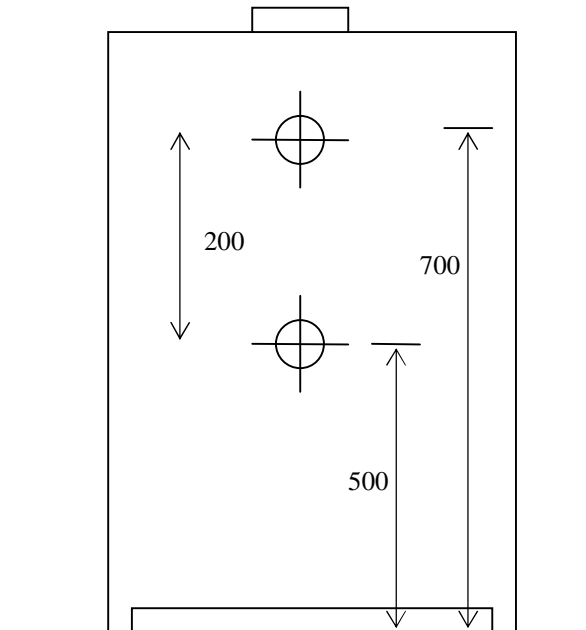
Dry	-
Water Booster	3.5Kw
Water Booster	4.5Kw
Boiler	10Kw

WATER CONNECTIONS

Standard & High Output Water Boosters



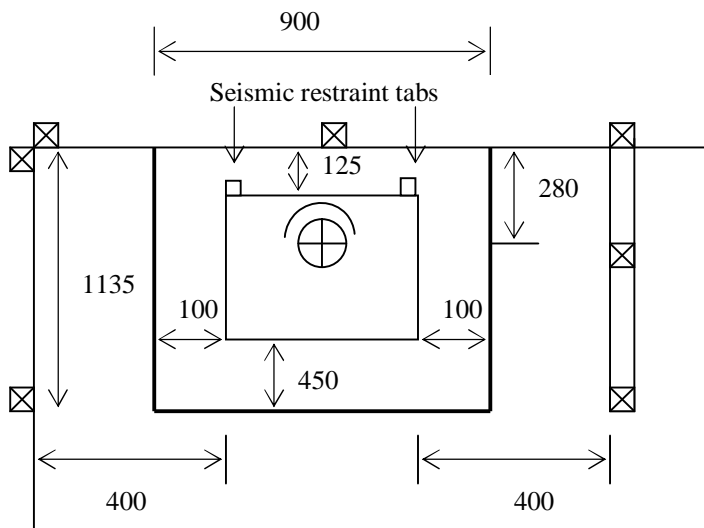
Central Heating Model



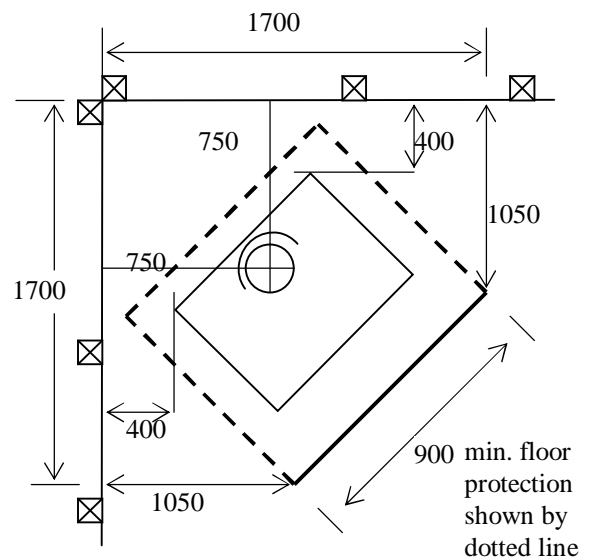
* Check on Site

BOTH VIEWED FROM REAR

MINIMUM WALL CLEARANCES & FLOOR PROTECTION REQUIREMENTS



Refer to detailed page on reducing
wall clearances



These measurements are achieved with the fitting of a ½ round stainless steel flue reflector. The fitting of a splashback does not alter these measurements.

Floor Protection: Non Combustible: All floor coverings must be trimmed to the minimum dimensions above.

Combustible Minimum: A 12mm thick fire cement sheet – Optional covered in tiles.

Alternatives – Bricks (or concrete to a min. 50mm) laid on a sheet of galvanised iron

To Reduce Above Clearances

<u>SCREEN MATERIAL</u>	<u>SPACED</u>	<u>FACTOR</u>	<u>REAR*</u>	<u>SIDE/CORNER</u>
<u>General</u>				
Single Layer	12mm	0.40	50*mm	160mm
Single Layer	25mm	0.30	38*	120
Two Layers	12 + 12mm	0.20	25*	80*

Screen Material must be a non combustible material such as:

- Promina Wall Board
- Eterpan Wall Board
- Hebel – AAC panel

***NB:**

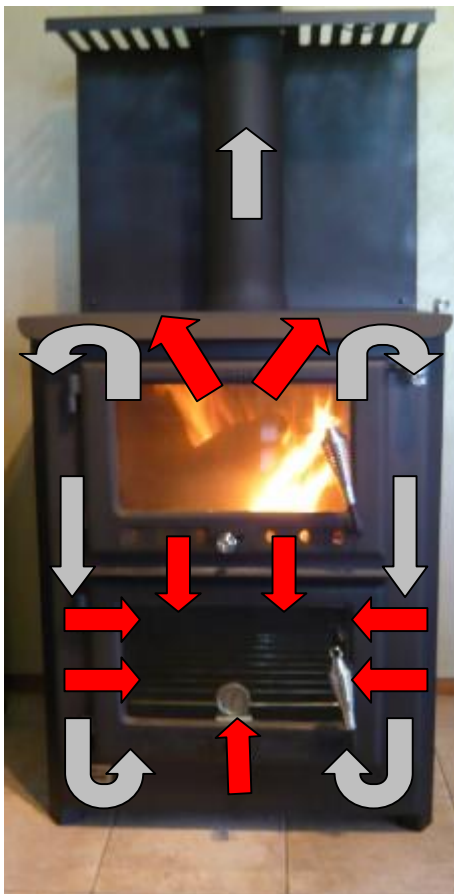
- Measurements given are from combustible wall.
- Under the DBH Building Code the rear minimum clearance is 100mm required for access to any installed plumbing pipework– check with your installer.

SOURCE

'Promina' and Eterpan Progressive Building Systems Ltd. Ph: 0800 2255 727
 Hebel – check www.hebel.co.nz

Flue Damper Closed

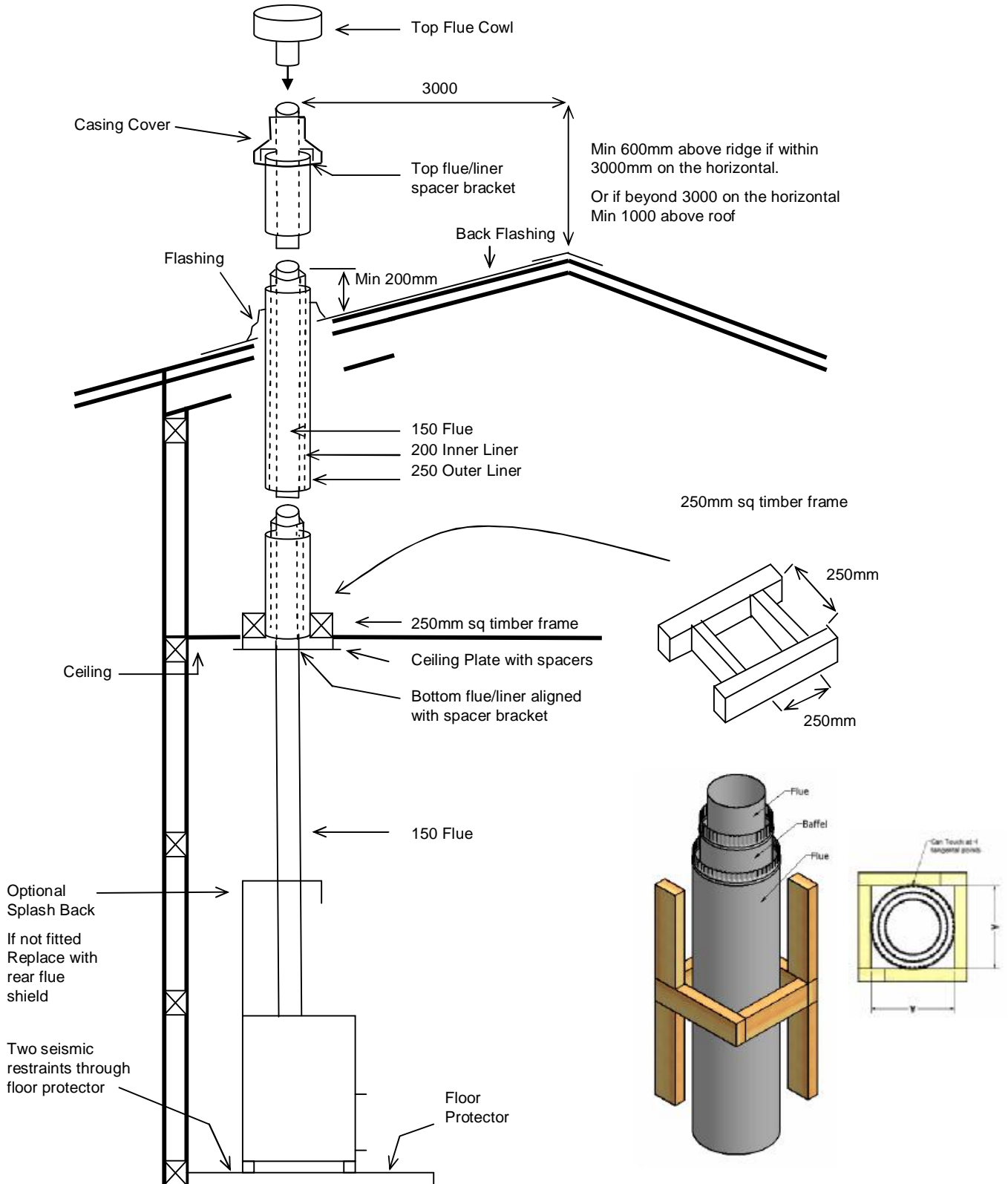
Flue Damper Open



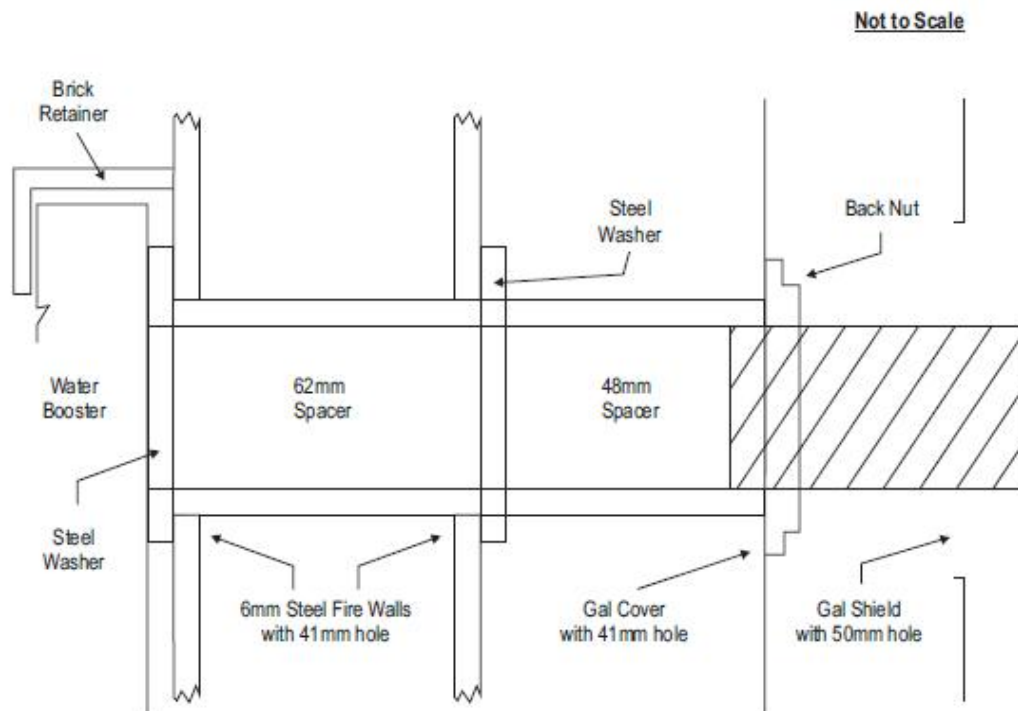
- Smoke Path
- Radiant Heat

Tested Freestanding 150mm Flue System

Installed to AS/NZS2918:2001



FITTING OF GOURMET WATER BOOSTERS



IMPORTANT - The wetback connection MUST be open vented at low pressure

Steps

1. Remove rear bricks and brick retainer.
2. The 430mm model fits fully across. The 370mm model requires a trimmed brick at each end.
3. Remove water booster hole covers – nuts to rear
4. Water booster with a washer on each pipe is fitted inside the Fire Box
5. Longer (62mm) spacer pushes through from rear to touch washer.
6. Second washer is positioned thus sealing the Flue Cavity.
7. Slide smaller spacer (48mm) into position and secure with the back nut against it and outer galvanized cover shield.
8. Normal Piping can now be connected to the threaded pipe.
9. It is not necessary to remove the outer galvanized cover shield – although the 50mm hole may have to be increased in size for access.
10. The brick retainer is replaced around the water booster and side bricks.
11. Ensure system is full of water before lighting fire.

